

# 2020 Lower Hudson MaMA Action Map

PRISM boundaries    Town an city lines    County lines

## EAB first detected 2010-2012

**Actions:** Search for lingering ash, using MaMA Lingering Ash Search project on Aneccdata.org; protect them from felling. Remove dead/dying ash near potential lingering ash.

## EAB first detected 2013-2014

**Actions:** Protect healthy, untreated, mature native ash ("potential lingering ash") in this area from felling; report their locations using the MaMA Lingering Ash Search project on Aneccdata.org. Remove dead/dying ash near potential lingering ash. Establish mortality monitoring plots for the MaMA Monitoring Plots Network.

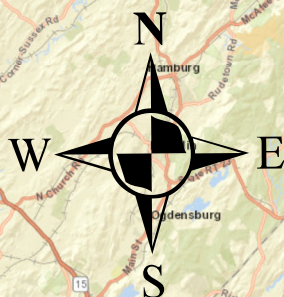
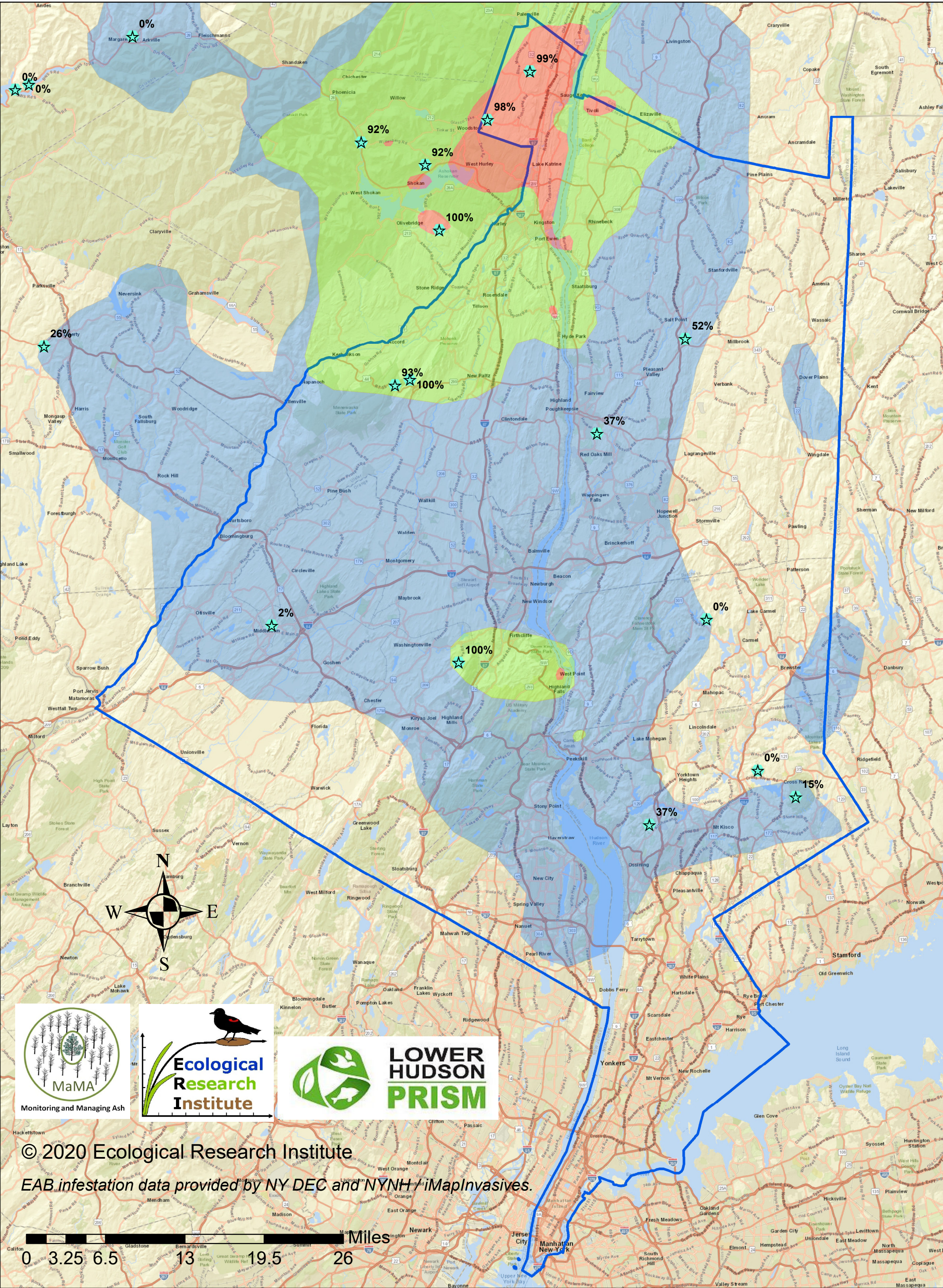
## EAB first detected 2015-2019

**Actions:** At sites with  $\geq 50\%$  mortality, protect healthy ash trees from felling; report their locations using the MaMA Lingering Ash Search project. Establish mortality monitoring plots as part of the MaMA Monitoring Plots Network.

## Areas with no infestation yet detected

**Actions:** Inspect ash for EAB evidence and report data via MaMA Ash/EAB Surveys project. Consider establishing a mortality monitoring plot as part of the MaMA Monitoring Plots Network, especially if you detect EAB. Do ash management planning, including setting aside trees for lingering ash detection. Do invasive plant mitigation if appropriate.

★ MaMA ash mortality monitoring plot (showing percentage of adult ash trees killed by EAB as of 2019)



© 2020 Ecological Research Institute

EAB infestation data provided by NY DEC and NYNH / iMapInvasives.

Miles  
0 3.25 6.5 13 19.5 26