



# 2020 Lower Hudson MaMA Action Map

 PRISM boundaries     Town and city lines     County lines


### EAB first detected 2010-2012

 Actions: Search for lingering ash, using MaMA Lingering Ash Search project on Aneadata.org; protect them from felling. Remove dead/dying ash near potential lingering ash.


### EAB first detected 2013-2014



 Actions: Protect healthy, untreated, mature native ash ("potential lingering ash") in this area from felling; report their locations using the MaMA Lingering Ash Search project on Aneadata.org. Remove dead/dying ash near potential lingering ash. Establish mortality monitoring plots for the MaMA Monitoring Plots Network.

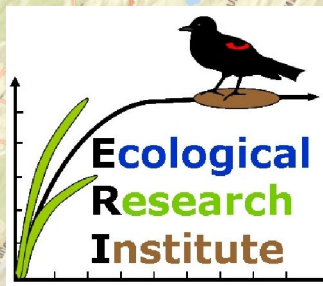
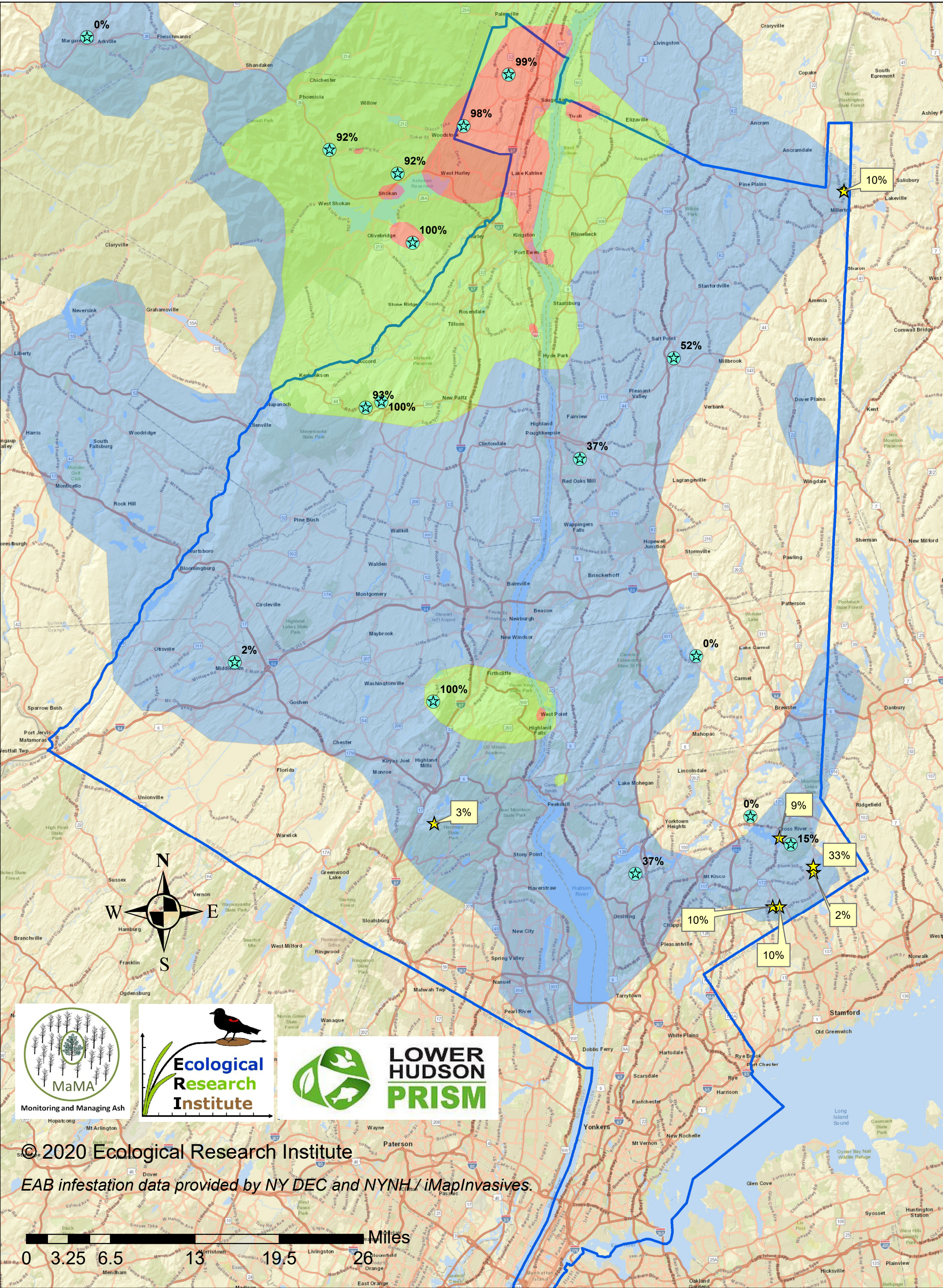
### EAB first detected 2015-2019

 Actions: At sites with ≥50% mortality, protect healthy ash trees from felling; report their locations using the MaMA Lingering Ash Search project. Establish mortality monitoring plots as part of the MaMA Monitoring Plots Network.

### Areas with no infestation yet detected

 Actions: Inspect ash for EAB evidence and report data via MaMA Ash/EAB Surveys project. Consider establishing a mortality monitoring plot as part of the MaMA Monitoring Plots Network, especially if you detect EAB. Do ash management planning, including setting aside trees for lingering ash detection. Do invasive plant mitigation if appropriate.

 MaMA ash mortality monitoring plot (showing percentage of adult ash trees killed by EAB as of 2019)     MaMA ash mortality monitoring plot established in 2020



© 2020 Ecological Research Institute  
EAB infestation data provided by NY DEC and NYNH / iMapInvasives.

0 3.25 6.5 13 19.5 26 Miles