



2022 CRISP MaMA Action Map

 PRISM boundaries  Town and city lines  County lines


Lingering ash search zone (ash mortality from EAB \geq 95%)

 Actions: Search for lingering ash, using MaMA Lingering Ash Search project on Aneccdata.org; protect them from felling. Remove dead/dying ash near potential lingering ash.


High ash mortality from EAB (>50% and <95%)


 Actions: Protect healthy, untreated, mature native ash ("potential lingering ash") in this area from felling; report their locations using the MaMA Lingering Ash Search project on Aneccdata.org. Remove dead/dying ash near potential lingering ash. Establish mortality monitoring plots for the MaMA Monitoring Plots Network.

Lower ash mortality from EAB (<50%)

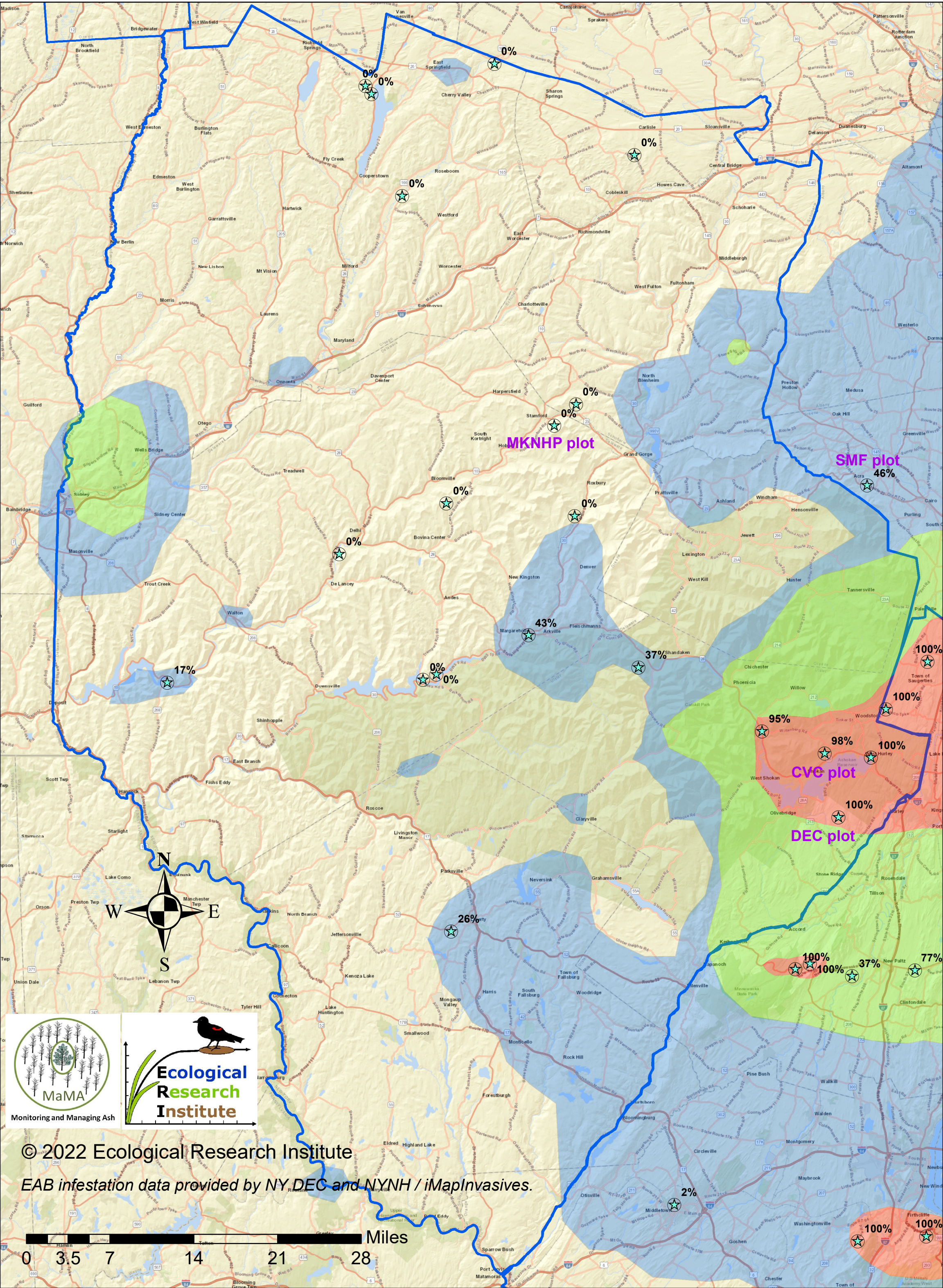
 Actions: At sites with \geq 50% mortality, protect healthy ash trees from felling; report their locations using the MaMA Lingering Ash Search project. Establish mortality monitoring plots as part of the MaMA Monitoring Plots Network.

Areas with no infestation yet detected or data not available

 Actions: Inspect ash for EAB evidence and report data via MaMA Ash/EAB Surveys project. Consider establishing a mortality monitoring plot as part of the MaMA Monitoring Plots Network, especially if you detect EAB. Do ash management planning, including setting aside trees for lingering ash detection. Do invasive plant mitigation if appropriate.

 MaMA Ash Mortality Monitoring Plots (showing percentage of adult ash trees killed by EAB as of 2022)

Demonstration plots - e.g. "SMF plot"



© 2022 Ecological Research Institute
 EAB infestation data provided by NY DEC and NYNH / iMapInvasives.

0 3.5 7 14 21 28 Miles